

**NEWPORT NATURALS
AT SPRUCE CORNER**

SINCE 1979

- ◆ IRIS
- ◆ ALPACAS
- ◆ FIBER ARTS
- ◆ LICENSED MASSAGE THERAPY
- ◆ WATERCOLOR PAINTINGS

DRIVING DIRECTIONS

We are 42 miles northeast of Spokane on Highway 2, and 27 miles west of Sandpoint, ID.

As you enter Newport from Spokane, turn north at the Golden Spur Motel (Calispel Avenue). Drive to 4-way stop. Turn left (First Street). Drive 2 blocks to Craig Avenue. Turn right. Drive two blocks to our garden entrance. You will see our iris fields and our animals.

From Highway 20, follow Spokane signs to the Golden Spur Motel (Calispel Avenue). Continue as above. From Sandpoint, follow the Spokane signs as for Highway 2.

From Highway 41, follow Spokane signs as for Highway 2.

Bring your paints or camera!

SEE US ON FACEBOOK:

<https://www.facebook.com/pages/Newport-Naturals-Iris/119701358048689>

IRIS IRIS

2500 Varieties of
Historic to New
TB IB BB SDB MDB
IRIS

**NEWPORT NATURALS
at SPRUCE CORNER**

Robert & Linda Karr
IRIS and Alpaca Farm
205 N. Craig Ave.
Newport, WA 99156
1.509. 671.1540

VISITORS
WELCOME

Zone 4

web: www.sprucecorner.com
email: iris@sprucecorner.com

APPROXIMATE BLOOM TIME

**VARIES WITH WEATHER CONDITIONS
CALL US OR CHECK OUR WEBSITE FOR
BLOOM UP-DATES**

WWW.SPRUCECORNER.COM

Usual Bloom dates:

May 10 MDB and SDB

May 28 BB, IB, early TB

June 5 TB and some Siberian

June 25 Spuria and Japanese—no

Japanese available for 2012

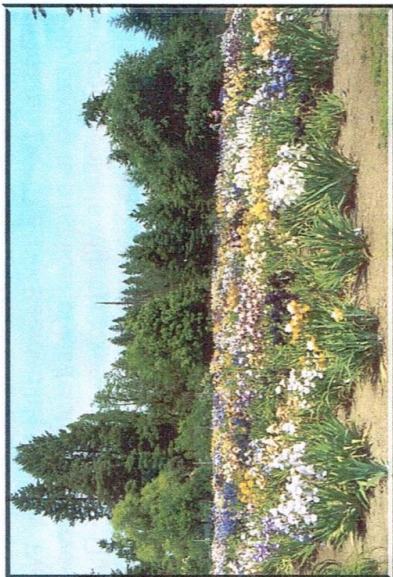
**SAVE YOURSELF A TRIP AND CALL, CHECK
OUR FACEBOOK PAGE, OR CHECK THE WEB
SITE FOR WHAT IS BLOOMING**

509.671.1539; 509.671.1540

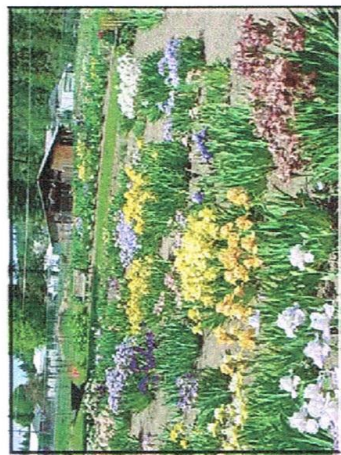
GARDEN OPEN FRIDAY, SATURDAY, SUNDAY
MOTHERS DAY THROUGH FATHERS DAY
10 AM—6 PM

AND BY APPOINTMENT
GARDEN CELL 509-671-1540

**WELCOME
TO OUR
IRIS
GARDEN**



West Field, Newport Naturals Iris



Median Garden, Newport Naturals Iris

HELLO

IRIS HAVE BEEN AN IMPORTANT PLANT IN OUR GARDENS SINCE WE FIRST GARDENED IN 1962. SINCE WE HAVE BEEN IN NEWPORT, WE HAVE ADDED MANY VARIETIES OF IRIS TO OUR COLLECTION. ORIGINALLY, WE STARTED WITH ALL BEARDED IRIS, BUT WE NOW GROW THE VARIETIES LISTED IN THE THIRD COLUMN.

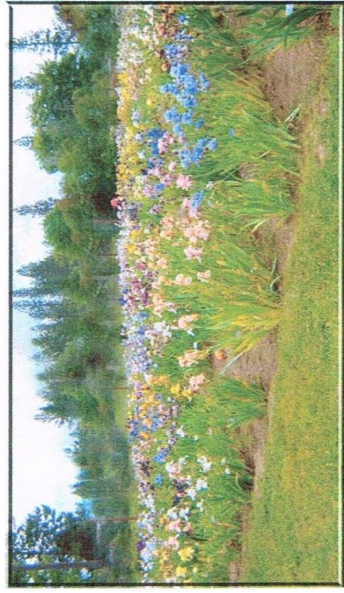
We are members of the American Iris Society, the Historic Iris Preservation Society, The Tall Bearded Iris Society, Region 13 of the American Iris Society, and the Town and Country Iris Society in Spokane. We are display gardens for Historic Iris, Standard Dwarf Bearded iris, Medi-an Iris, and for The Tall Bearded Iris Society. We also belong to a number of iris-related list-serves and communicate with iris lovers worldwide. Our website www.sprucecorner.com lists some of our irises for sale for this year.

SEE US ON FACEBOOK: <https://www.facebook.com/pages/Newport-Naturals-Iris/119701358048689>

WE HOPE YOU ENJOY OUR GARDENS

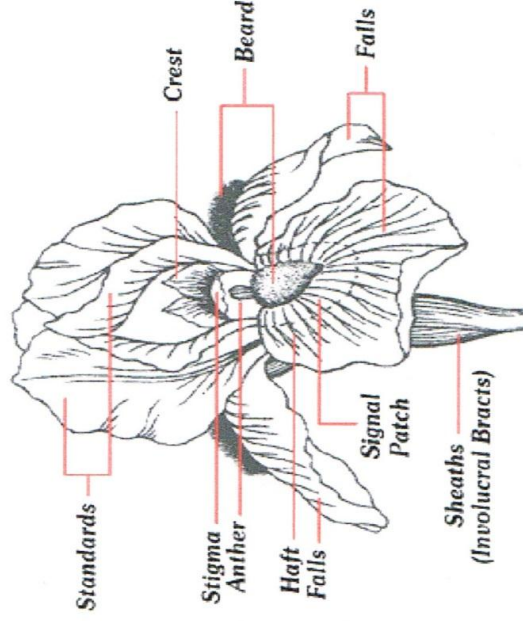
Gardening of any type is a labor-intensive practice, but Iris are easy to grow in our climate and are not affected by iris borers.

Robert and Linda Karr



South Field, Newport Naturals Iris

Parts of an Iris



Iris Terms

Amoena white standards, colored falls

Beards (B) bushy hairs on falls

Bicolor standards and falls are different colors

Bitone standards and falls are different shades of the same color

Blend combination or mixture of two or more colors

Broken Color splashed or streaked with another color (usually white)

Dykes Medal (DM) highest award given to one iris annually

Falls (F) lower 3 flower petals

Historic Irises over 30 years old. Most dates are the year introduced into commerce. A few are registration dates.

Luminata light area under beard; rays on falls

Neglecta light blue standards, darker falls

Plicata speckled, stitched, or solid margin of color on lighter ground

Self an iris of one color

Space Age (SA) has horns, spoons, or flounces extending from the beard

Standards (S) upper 3 flower petals

Variegata yellow standards, dark colored falls

Bearded Iris Types

AB (Arilbred) is a hybrid between the exotic aril irises of the Near and Middle East and the bearded irises. Unusual color and form.

BB (Border Bearded) is a shorter version of the TB in the height range of 16" to 27 1/2". Usually bloom with the TB.

IB (Intermediate Bearded) is from 16" to 27 1/2" tall and are usually crosses between SDB and TB. Bloom near the end of the SDB season and the beginning of the TB bloom.

MDB (Miniature Dwarf Bearded) has stalks less than 10" tall. Bloom very, very early in the season.

MTB (Miniature Tall Bearded) is from 16" to 25" tall, very refined and dainty. Also called table Iris.

SDB (Standard Dwarf Bearded) has stalks from 8" to 16". Bloom very early in the season.

TB (Tall Bearded) is the most common and most popular bearded iris. Minimum height over 27".

OTHER IRIS TYPES YOU MAY SEE

SIBERIAN

SPURIA

LOUISIANA

JAPANESE (ENSATA)

In our climate, iris should be replanted before Labor Day. Our iris are dug when dormant—usually after July 15. Iris are washed prior to delivery.



YOU CAN GROW GREAT IRIS

WHEN TO PLANT:	July and August in Zones 4 and 5 Later in warmer Zones	FOR BEST RESULTS, PLANT YOUR IRIS AS SOON AS YOU RECEIVE THEM
WHERE TO PLANT:	Half day of sun; good garden soil; Well-drained soil	
DISTANCE APART:	12 to 24 inches; in a row or circle	
DEPTH TO PLANT:	Set top of rhizome ½ to 1 inch below the surface of the soil; roots may be trimmed. Roots should fan down into the soil.	
WATERING:	Deep water upon planting; may not need additional water when Established. Do not let iris stand in water.	
FERTILIZATION:	10-10-10 or other balanced fertilizer, bone meal, alfalfa pellets (FOR HORSES, NOT RABBITS), super phosphate, compost, etc. Work into soil about 6 inches from rhizome early in spring and a month after bloom	
CARE:	May be mulched with very light mulch first year. Remove mulch in very early spring. Watch for disease. Cut or break flower stalks off close to rhizome after blooming. Use Preen or equivalent to control germination of weeds. Do not spray rhizomes or after bud stalks appear. Avoid cutting leaves in the summer—they are needed to feed the new rhizome. Remove old stalks.	
FALL CARE:	Divide every 3 to 4 years or when crowded.	
REFERENCES:	William Shear. <u>The Gardener's Iris Book</u> , Taunton Press, 1998. ISBN 1-56158-240-9	
CONTACT US:	Robert and Linda Karr Newport Naturals At Spruce Corner Iris 205 N. Craig Avenue Newport, WA 99156 iris@sprucecorner.com Facebook: www.facebook.com/pages/Newport-Naturals-Iris/119701358048689 www.sprucecorner.com Pacific Time 509-671-1539; 509-671-1540	